

### Drop Volume Analyser DVA-1



**Classical method to measure the surface and interfacial tension  
of liquids**

**Direct setting of time!**

**Principle is based on the accurate determination of the volume of drops  
detaching from circular capillaries.  
Fast drop formation allows short time measurements.**

#### **Instrumental parts**

- very compact construction
- automatic dosing system
- temperature controlled measuring cell
- data acquisition via RS-232
- automatic refilling
- automatic cleaning procedure

#### **Tensiometry**

BPA-1P

BPA-1S

**DVA-1**

PAT-1

PAT-2P

STA-1

DPA-1

#### **2D-Rheology**

ODBA-1

ISR-1

#### **Foams**

FA-1S

#### **Emulsions**

DBMM-1

## Features of the instrument

surface and interfacial tension of liquids  
dynamic interfacial tensions in a time range of less than one second up to several minutes

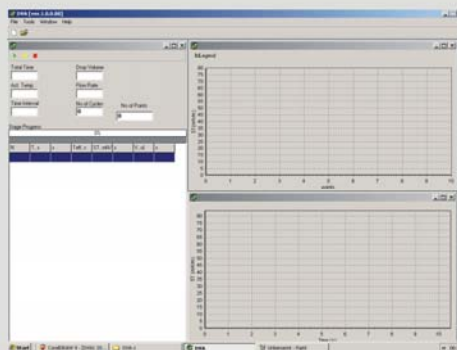
complements the profile analysis tensiometry at short times, in particular for liquid/liquid interfaces

use with any PC or laptop

no time-consuming filling procedure as it refills automatically from a reservoir  
temperature controlled cell

small size, small price, and easy to handle

correction of the viscosity effects at short drop times



## Fields of Application

surfactant science  
ink jet printing  
coating technology  
foam and emulsion technology  
detergency

pharmacy  
cosmetics  
food technology  
medicine and biology  
ecology

## Technical Data:

Range of surface and interfacial tension	1 to 100 mN/m; resolution: $\pm 0.2$ mN/m
Time range: - constant drop formation - time scan (standard)	0.2 s to about 1000 s 0.2 s to about 1000 s
Drop formation	single drops averaged number of drops
Syringe volume (automatic refill)	0.1, 0.25, 0.5, 2.5 ml
Density difference	> 0.1 g/cm <sup>3</sup>
Software	Windows software (free update over 1 years after purchase)
Measuring duration	1 min to 1 hour
Measuring option: - constant drop time - standard mode	arbitrary number of points selection of points in a user given time interval
Temperature range	10 ... 80°C
Size of device (L x W x H)	200 x 200 x 210 mm
Weight	3 kg
Interface	RS-232
Power supply	24 VDC, 40 W
Extra accessories	capillaries ;

## Tensiometry

BPA-1P

BPA-1S

DVA-1

PAT-1

PAT-2P

STA-1

DPA-1

## 2D-Rheology

ODBA-1

ISR-1

## Foams

FA-1S

## Emulsions

DBMM-1